

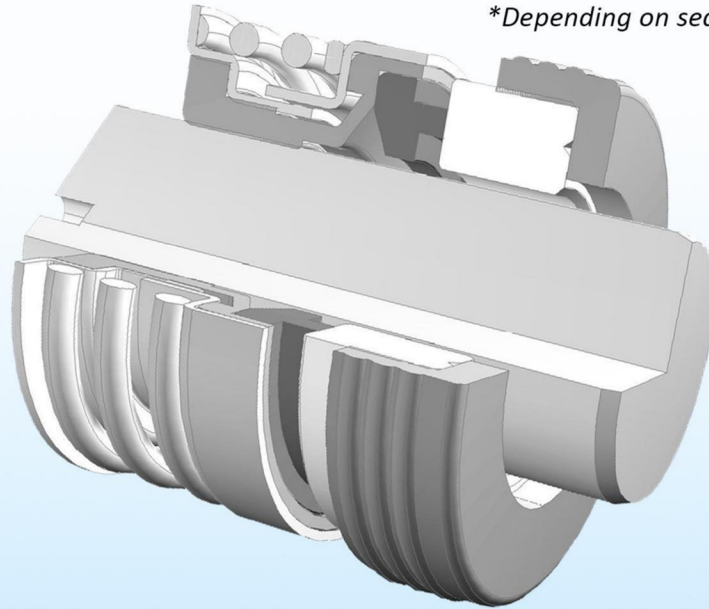
Advantage Seal Type 16



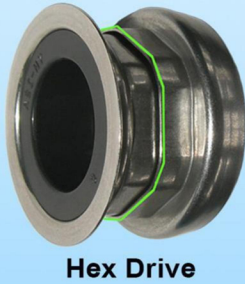
The versatile, self-aligning choice for services:

- Up to 5,000 sf/m *
- Up to 150 psig (10 bar) *
- From -40°F (-40°C) to 400°F (204°C) *

*Depending on seal size and material selection



Why choose the Advantage Seal Type 16?



Unitized Design

- No-hassle handling
- Easy to install
 - Rotating face will not detach
 - No removable drive gasket

Hex Drive

- Will not disengage during operation
- Protects the elastomer bellows from damage

Economical Choice

- High volume, standardized components

Ideal for:

- Pool Pumps
- Spa Pumps
- Stamped Pumps
- Smaller Industrial and Commercial applications



Crimped Head

- Greatly simplifies installation
- No adhesive on seal face
- Prevents penetration of solids into the seal head
- Cushions rotary seal face
 - No metal to seal face contact

Single Coil Spring

- Helps prevent clogging

For use with a variety of mating rings

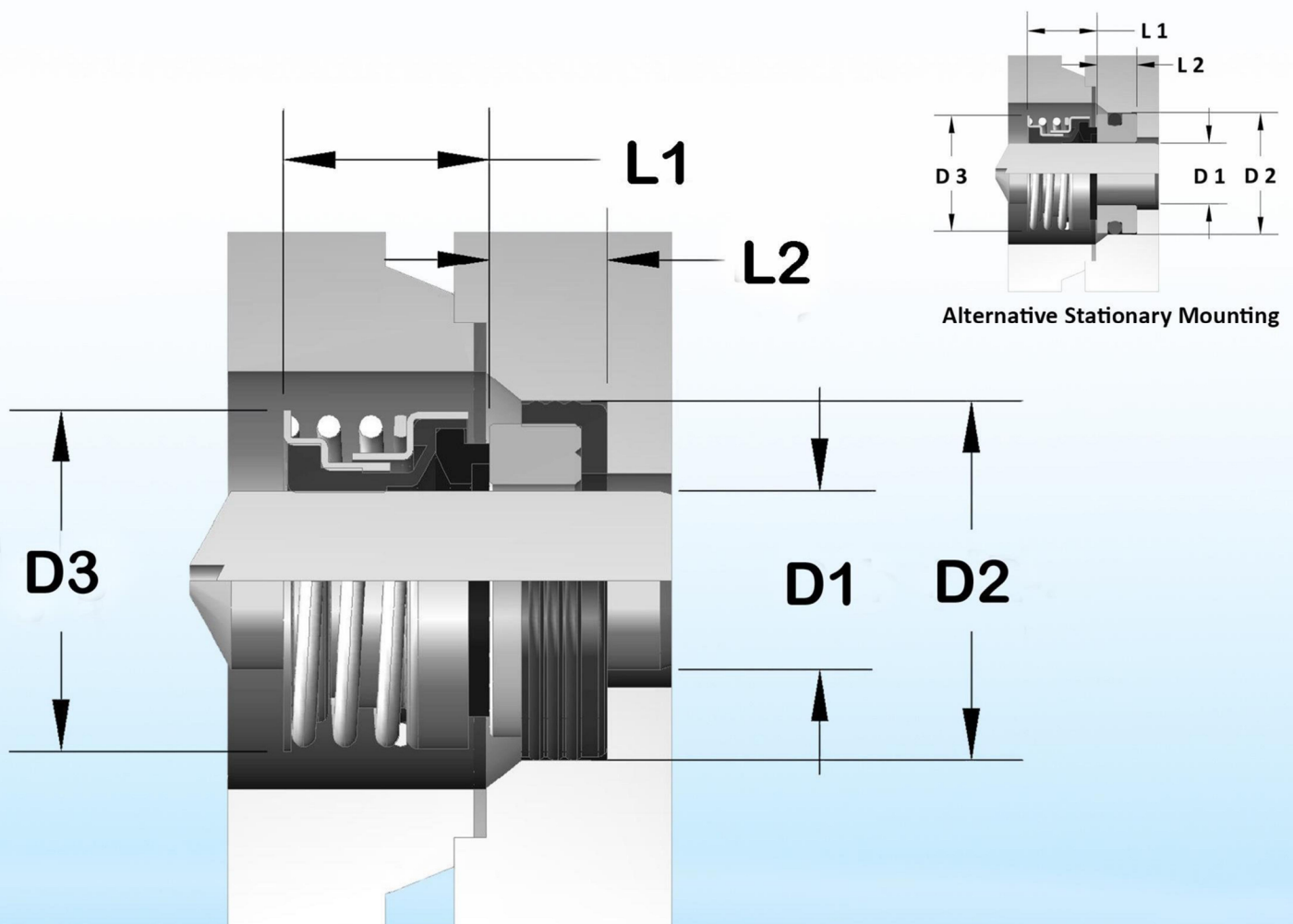
- O-Ring Mount
- Cup Mount
- DIN

Non-Fretting design

Advantage Seal Type 16 replaces:

- John Crane Type 6
- Sealol Type 60L
- Pac-Seal Type 16
- US Seal Type A

Typical Type 16 Dimensions



D1		D2		D3		L1		L2	
Inches	Millimeter	Inches	Millimeter	Inches	Millimeter	Inches	Millimeter	Inches	Millimeter
0.375	9.53	0.875	22.23	0.915	23.24	0.656	16.66	0.281	7.14
0.437	11.10	1.000	25.40	0.915	23.24	0.656	16.66	0.312	7.92
0.500	12.70	1.000	25.40	0.915	23.24	0.656	16.66	0.312	7.92
0.625	15.88	1.250	31.75	1.190	30.23	0.718	18.24	0.406	10.31
0.750	19.05	1.375	34.93	1.300	33.02	0.718	18.24	0.406	10.31
0.875	22.23	1.500	38.10	1.460	37.08	0.812	20.62	0.406	10.31
1.000	25.40	1.625	41.28	1.617	41.07	0.812	20.62	0.437	11.10

Tolerances and Finishes

- Equipment Shaft ± 0.002 (0.05mm)
- Seat Bore ± 0.002 (0.05mm)
- Maximum End-Play 0.005 (0.13mm)
- Shaft / Sleeve surface finish 35 Ra to 105 Ra